

# Analyzer for ANSYS® Software

## PROFESSIONAL

### Key Features & Benefits

- Enterprise-wide ANSYS usage data collection**  
 Live data is collected and used in reports so managers can easily see how their IT assets are being used across the organization
- On-demand and periodic reporting capability**  
 Standard report templates for instant reporting while scheduled reports are generated automatically at configurable intervals
- Easy import into Excel**  
 All reports can also be viewed in Microsoft® Excel™ with a single click
- Facilitate pay-per-use and chargeback process**  
 Generate usage reports grouped by user groups, departments or cost centers as basis for cost allocation

Open iT, Inc. is a leading provider of software asset management tools, used by a wide range of companies to reduce the cost and complexity of managing corporate hardware and software assets. Many engineering, design, and research disciplines utilize powerful application software. Open iT management software helps ensure maximum utilization and ROI of these valuable assets. Open iT is the first partner of ANSYS® for software usage monitoring and reporting.

The **Open iT Analyzer for ANSYS Software Professional** is a powerful tool designed to deliver accurate and reliable ANSYS usage monitoring and reporting to give managers an overview on how their engineering simulation software are being used across the organization.

Analyzer for ANSYS Software Pro is intended for IT managers, System Administrators or CAE users who need to create standard usage reports per user, per product or per group through a simple yet effective reporting interface.

### Components and Features

Analyzer for ANSYS Software Pro utilize **Reporting Server** for reporting. Reporting Server is Open iT's reporting tool with proprietary database that can generate both historical and real-time usage reports.

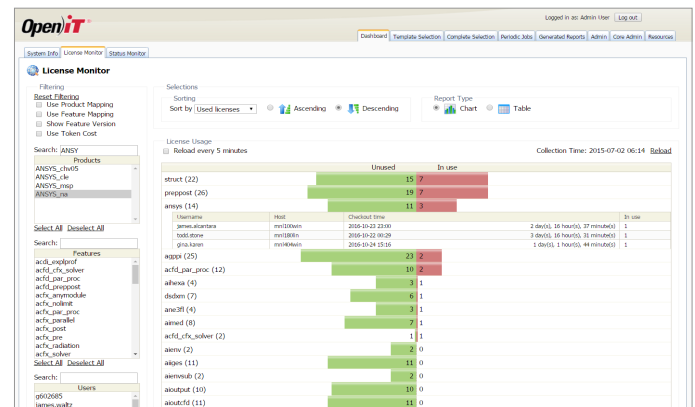
#### Real-time License Monitor

The License Monitor feature provides a complete, real-time overview of software usage, detailing when and by whom licenses are used, from an enterprise view down to a single user. It then allows a quick comparison of users, product and feature usage. ▶

#### Status Monitor

**Product Status** shows vendor license information and license server's connection status with the Open iT server.

**Feature Expiry** shows feature information such as its vendor license, feature name, version, and its expiration date. This is useful to get a snapshot of license validity for all your products, and to avoid a situation where no license is available for applications, particularly for those that are mission-critical. ▶



The screenshot shows the 'Feature Expiry' dashboard. It contains a table with columns for 'Product Name', 'Feature Name', 'Feature Version', 'Total Licenses', and 'Expiry'. The table lists various ANSYS products and their expiration dates, such as '2010-07-12 16:55'.

Product Name	Feature Name	Feature Version	Total Licenses	Expiry
ANSYS_chv05	apicart	N/A	5	2010-07-12 16:55
ANSYS_chv05	anetra	N/A	4	2010-07-12 16:55
ANSYS_chv05	ane3td	N/A	1	2010-07-12 16:55
ANSYS_chv05	anacrs	N/A	5	2010-07-12 16:55
ANSYS_chv05	anacutpat	N/A	5	2010-07-12 16:55
ANSYS_chv05	apstrim	N/A	4	2010-07-12 16:55
ANSYS_chv05	anacut	N/A	7	2010-07-12 16:55
ANSYS_chv05	anacutfd	N/A	5	2010-07-12 16:55
ANSYS_chv05	alqps	N/A	5	2010-07-12 16:55
ANSYS_chv05	adaf	N/A	5	2010-07-12 16:55
ANSYS_chv05	anmed	2010/0531	8	2010-07-12 16:55
ANSYS_msp	apstrim	N/A	3	2010-07-12 16:55
ANSYS_msp	anetra	N/A	2	2010-07-12 16:55
ANSYS_msp	apss	N/A	1	2010-07-12 16:55
ANSYS_msp	anacutpat	N/A	3	2010-07-12 16:55
ANSYS_msp	anacutfd	N/A	2	2010-07-12 16:55
ANSYS_msp	ane3	N/A	3	2010-07-12 16:55
ANSYS_msp	alqps	N/A	1	2010-07-12 16:55
ANSYS_msp	wbuxnc	N/A	0	2010-07-12 16:55
ANSYS_msp	prepprot	N/A	2	2010-07-12 16:55

Open IT Software tools that analyze and optimize your IT resources:

**LicenseAnalyzer™**

Provides an enterprise view of software applications enabled by license managers, showing when and by whom they are used over time, by location, business unit or project group. Enables chargeback accounting, usage-based license agreements, accurate workflow analysis and optimal license usage.

**LicenseOptimizer™**

Monitors activity levels for installed applications and can free up unused licenses for active users on high priority projects, delivering extremely targeted license management.

**SystemAnalyzer™**

Measures CPU, memory and I/O usage for all applications, users, and hosts, as well as application usage and inventory for PC's and workstations. Permits fine-tuning of machine capacity and chargeback or usage accounting for a variety of system-wide IT functions.

**StorageAnalyzer™**

Delivers an overview of disk and backup data, enabling optimal data storage management. Shows trends and potential capacity problems and provides an accurate basis for charging for data storage services.

**ApplicationTracker™**

Monitors activity levels of all applications on Windows and Unix platforms. Includes an independent licensing method system that can run without using wrappers.

**UsageAnalyzer™**

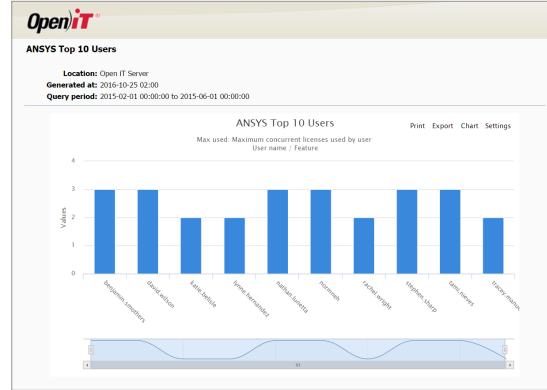
Tracks keyboard and mouse activities to find inefficient computer user patterns and to monitor activity levels of user/hosts and applications.

\*Supports Unix and Windows platforms.

**Flexible Reporting**

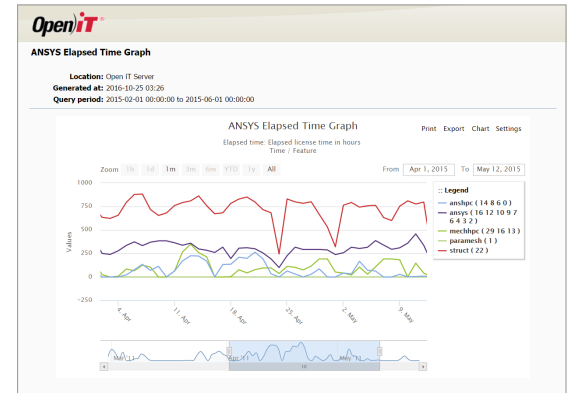
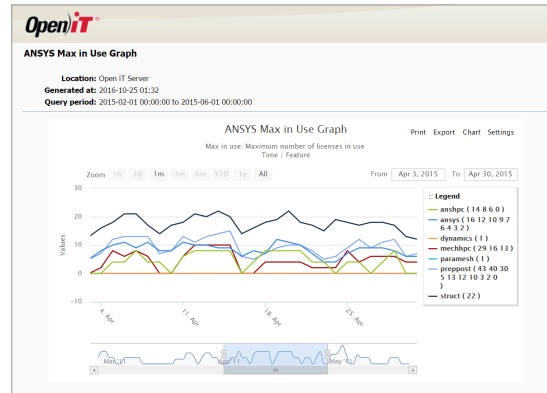
Create advanced drilldown reports with unmatched flexibility and detail, or easily create recurring reports that are automatically created daily, weekly, monthly, etc. The reports are web-based, enabling you to easily integrate your favorite reports in the corporate intranet portal, distribute them by email, or simply open them up in Microsoft® Excel™ with a single click for further massaging and analysis.

Reports can be presented visually with easy to-understand graphs and charts; and/or presented in detailed tabular reports with information such as product, application, feature, user name or host name. Below are sample reports from Analyzer for ANSYS Software Professional:



**ANSYS Features - Max in Use and Elapsed Time**  
Location: Open IT Server  
Generated at: 2016-10-25 01:27  
Query period: 2015-02-01 00:00:00 to 2015-04-01 00:00:00

Time	Product	Feature	Max in use	Elapsed time	
2015-02	ANSYS_dent	ansys	6.00	3.98	
		mechhpc	6.00	29.33	
	ANSYS_hou	prepost	6.00	0.00	
		ansys	1.00	7.00	
	ANSYS_jon	ansys	4.00	28.00	
		dynamics	3.00	30.00	
	2015-03	ANSYS_dent	mechhpc	2.00	4.23
			paramesh	6.00	0.00
		ANSYS_hou	prepost	9.00	63.00
			struct	20.00	133.02
ANSYS_jon		ansys	4.00	397.30	
		mechhpc	10.00	1,574.00	
2015-04		ANSYS_dent	prepost	2.00	55.42
			ansys	2.00	1,075.92
2015-05		ANSYS_hou	ansys	8.00	677.30
			ansys	8.00	2,564.18
2015-06	ANSYS_jon	dynamics	0.00	0.00	
		mechhpc	4.00	46.27	



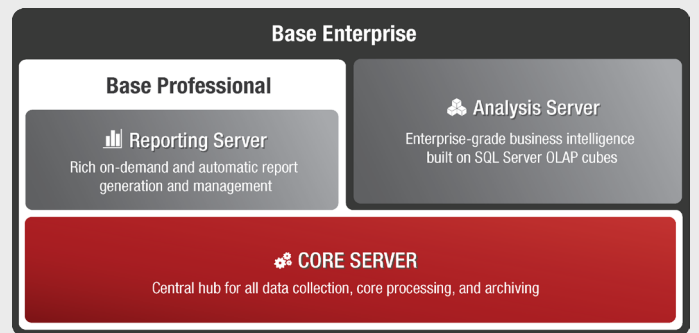
**Open iT Software Suite**

The Open iT Software Suite is a client/server based solution containing reporting tool mechanisms. The Open iT Core Server is the central hub for data collection, storage and processing. It receives collected usage data from optional client modules, which are installed on areas of the IT infrastructure targeted for usage monitoring. Processed data is then made available by the Core Server to the rest of the Open iT system for reporting and asset management purposes.

Open iT offers both On-premise and Cloud-based SAM solution to meet our customer's specific network architectural needs and requirements.

“  
Open iT is an indispensable tool for monitoring and managing our data resources.  
”

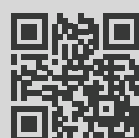
Ole Preben Berget, *Statoil*



- License Analyzer**: License Usage Analytics
- Application Tracker**: Active vs Inactive
- License Optimizer**: Automated License Harvesting
- System Analyzer**: Application Usage Analytics
- Storage Analyzer**: Storage Devices Metering
- Usage Analyzer**: Keyboard & Mouse Activity

Modular composition of the Open iT Software Suite

**Get Started**



Contact: [sales@openit.com](mailto:sales@openit.com)  
Open iT® is a registered trademark of Open iT, Inc. Other products, services and brands mentioned herein are trademarks and/or registered trademark of their respective owners.  
© 2017 Open iT, Inc. All rights reserved.

**AMERICAS**  
Two Park Ten Place  
16300 Katy Freeway  
Houston, TX 77094  
Tel: 281-599-3400  
Fax: 707-760-4575

**EUROPE | AFRICA**  
Karoline Kristiansens v. 5  
N-0661 Oslo,  
Norway  
Tel: +47 22 20 40 50

Im Neuenbühl  
D-71287 Weissach,  
Germany  
Tel: +49 7152 307090-0

**ASIA | MIDDLE EAST**  
Doña Aurora Blvd.  
Gulang-Gulang  
Lucena City 4301  
Philippines  
Tel: +63 42 710 8566