

Analyzer for Autodesk® Licensing

Key Benefits

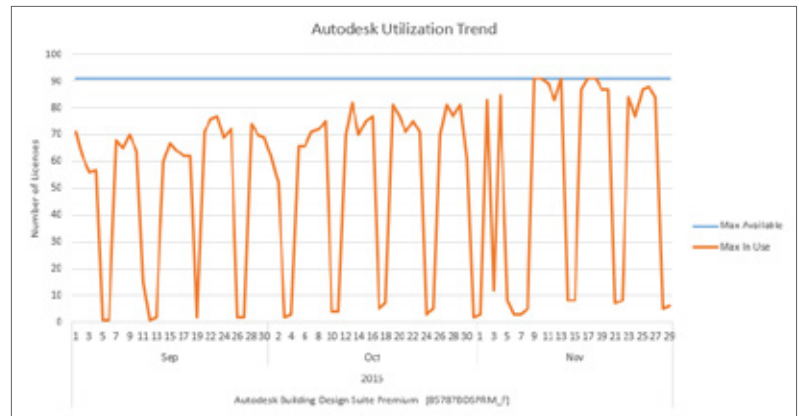
- Accurate metering of Autodesk license usage across the enterprise, both network and stand-alone, individually and combined across license servers
- Advanced web-based interface license usage metering
- Unmatched and exceptional fully customizable reporting capabilities
- Enables license compliance and audit by documenting true license accountability
- Simplifies planning for license sharing across timezones
- Provides a high ROI through actionable, highly accurate license usage information ideal for budgeting, purchase planning, and resource allocation

Analyzer for Autodesk Licensing provides an enterprise view of Autodesk licenses, showing when and by whom they are used over time, by location, business unit or project group both networked and stand-alone licenses. It provides advanced web-based interface license usage monitoring which is fully customizable. Generated reports can range from a worldwide total enterprise view down to a single user, real-time or historical, viewed on a web browser, printed, or exported to popular spreadsheets.

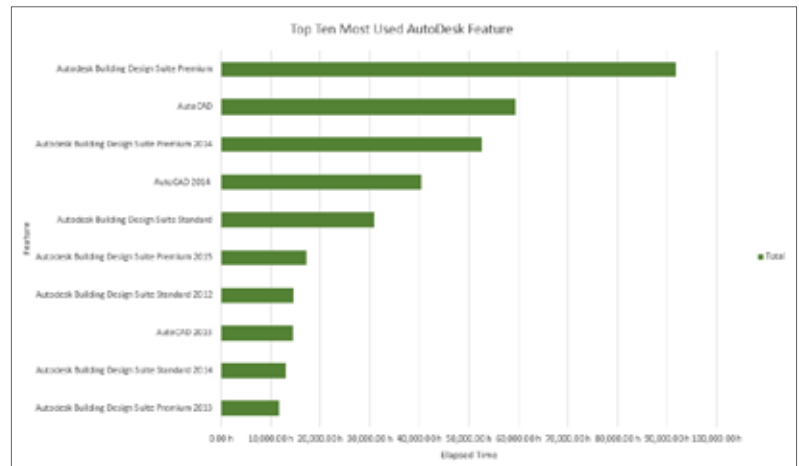
Effective management of Autodesk licenses is the fundamental requirement to better control software and hardware system resources. Analyzer for Autodesk licensing helps cut software license costs and reduce wastage on license usage by monitoring activity levels of Autodesk applications both on Windows and Linux platforms.

Flexible & Customizable Reporting

Autodesk Utilization Trend. This report shows how and how many licenses are utilized at a given period of time. ▶



Top Ten Most Used Autodesk Feature. This report shows the duration of the top Autodesk features. ▶



Key Features

- Identify which hostnames are using network, stand-alone and multi-seats stand-alone licenses including those hostname using single-user (free trial) licenses
- Module logging for all Autodesk applications
- Email alerts and notifications when an application is detected to be inactively used
- Web-based software license monitoring dashboard
- Notification thru email on denial monitoring
- Chargeback capabilities
- Ability to measure and report PPU Agreements
- License usage tracking from mobile devices

Powerful Asset Management Tools

Autodesk Software Inventory. This report shows what type of license (network, stand-alone, free trial) is being used. ►

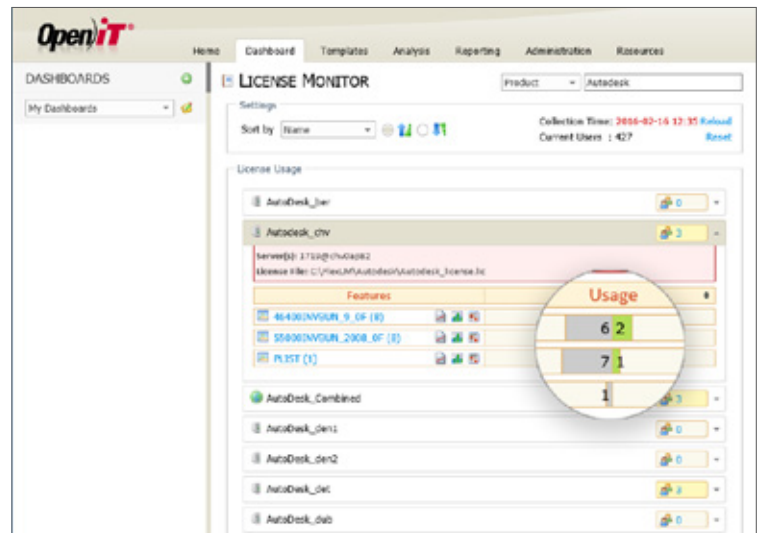
Time	Product	Product ID	Feature	Serial number	Release number	Location	License type	Host	Operating system	Cost
2016/10/18	AutCAD	4001	AutCAD LT 2012 - English	390-8199802	23.1.0.0	EN	Network	HW-1012188	windows_7_64-bit	1.00
			AutCAD LT 2012 - English	390-8000002	RL7	EN	Free trial	HW-1012188	windows_7_64-bit	1.00
			Autodesk NetworkSeat Pro2014	400-8000002	89	EN	Stand-alone	HW-1012188	windows_7_64-bit	1.00
			Autodesk NetworkSeat Pro2014	390-8204760	RL7	EN	Free trial	HW-1012188	windows_7_64-bit	1.00
			Autodesk NetworkSeat Pro2014	390-8000002	89	EN	Stand-alone	HW-1012188	windows_7_64-bit	1.00
			AutCAD LT 2012 - English	390-8126759	24.0.2.0	EN	Free trial	HW-1012188	windows_7_64-bit	1.00
			AutCAD LT 2012 - English	390-2908882	25.1.0.0	EN	Free trial	HW-1012188	windows_7_64-bit	1.00
			AutCAD LT 2012 - English	390-8204760	RL7	EN	Free trial	HW-1012188	windows_7_64-bit	1.00
			Autodesk NetworkSeat Pro2014	390-8000002	89	EN	Stand-alone	HW-1012188	windows_7_64-bit	1.00
			AutCAD LT 2012 - English	390-8126759	24.0.2.0	EN	Free trial	HW-1012188	windows_7_64-bit	1.00
			AutCAD LT 2012 - English	390-8126759	24.0.2.0	EN	Free trial	HW-1012188	windows_7_64-bit	1.00
			AutCAD LT 2012 - English	390-8000002	RL7	EN	Free trial	HW-1012188	windows_7_64-bit	1.00
			Autodesk NetworkSeat Pro2014	390-8000002	89	EN	Stand-alone	HW-1012188	windows_7_64-bit	1.00
			AutCAD LT 2012 - English	390-2908882	25.1.0.0	EN	Free trial	HW-1012188	windows_7_64-bit	1.00
			AutCAD LT 2012 - English	390-2908882	25.1.0.0	EN	Free trial	HW-1012188	windows_7_64-bit	1.00

Open iT Analyzer for Autodesk Licensing is packaged into two different editions.

Base Professional is the basic package which includes the Core Server, where the collected data is periodically sent, processed and stored, and a reporting tool with proprietary database that can generate both historical and real-time reports.

Base Enterprise provides most of the advanced reporting strategies. It is composed of Base Professional and the Analysis Server, an enterprise-grade, SQL-based analytical tool. It has built in report templates that can be subscribed through email alerts, a customizable dashboard with a simple drag-drop-and-save functionality and quick integration to different BI reporting tools.

License Monitor Portal with Alarms and Alerts. Our web-based monitoring component provides a complete, real-time overview of software usage on Autodesk license servers worldwide. ►



Open iT, Inc. is a leading provider of software asset management tools used by a wide range of companies to reduce the cost and complexity of managing corporate hardware and software assets. Many engineering, design, and research disciplines utilize powerful application software. Open iT management software helps ensure maximum utilization and ROI of these valuable assets.

“

The ability to view our utilization rates and share this information with our administrators has brought our users a greater awareness of waste. Initially, our administrators were given the task of reducing and eliminating unnecessary licenses, but recently users have been trying to take on this responsibility themselves.

”

Mr. Dai Matsubara
Nissan



Get Started



Contact: sales@openit.com

Open iT® is a registered trademark of Open iT, Inc. Other products, services and brands mentioned herein are trademarks and/or registered trademark of their respective owners. © 2016-2019 Open iT, Inc. All rights reserved.

AMERICAS

Two Park Ten Place
16300 Katy Freeway
Houston, TX 77094
Tel: 281-599-3400
Fax: 707-760-4575

EUROPE | AFRICA

Karoline Kristiansens v. 5
N-0661 Oslo,
Norway
Tel: +47 22 20 40 50

Im Neuenbühl
D-71287 Weissach,
Germany
Tel: +49 7152 307090-0

ASIA | MIDDLE EAST

Doña Aurora Blvd.
Gulang-Gulang
Lucena City 4301
Philippines
Tel: +63 42 710 8566