

Application Tracker™

Active vs Inactive Usage

Key Benefits

- Analyze application activity over time, providing an accurate picture of application usage
- Distinguish between active and dormant application usage
- Automatically generate graphical or tabular reports for internal analysis and chargeback. Collect detailed usage reports for use in vendor communications
- Map proficiency by monitoring usage patterns of various user groups, enabling targeted support and training

- Distinguishes between active and dormant application usage
- Reduces software costs by cutting surplus licenses
- Accounts for software usage across the enterprise
- Justifies new license purchases by registering usage intensity
- Supports business process improvements by documenting best practices

Open iT ApplicationTracker is an essential tool for managing software application portfolios. It provides an enterprise-wide view of your software license usage, and allows for the alignment of purchases and maintenance of user needs. It monitors activity levels of applications on Windows and Unix platforms, enabling advanced reporting of active/inactive software usage independent of licensing methods.

Through documentation of current usage patterns by location, department, user or project, ApplicationTracker provides the necessary information to optimize key areas, such as support, training and vendor management. With Open iT, best practices can be documented and business process improvements can be supported at a corporate level.

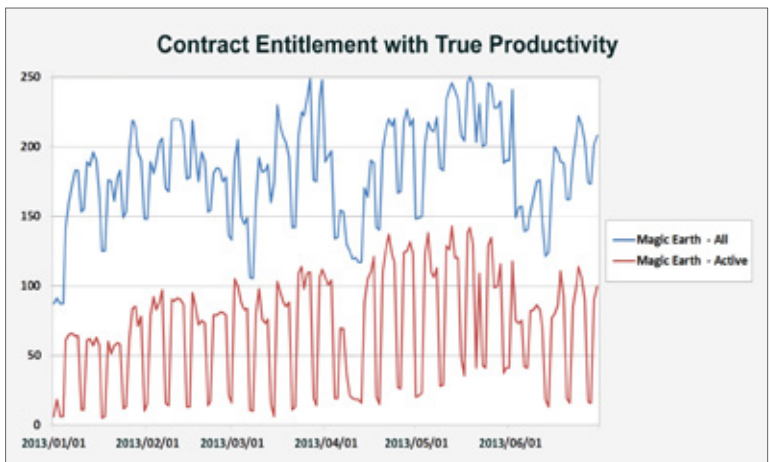
How ApplicationTracker Works

As part of Open iT's Software solutions for metering and analyzing hardware and software resource usage, ApplicationTracker monitors and reports software license usage on applications that use node locking licenses or even those that do not have a license manager. ApplicationTracker fetches the application usage from the underlying operating system - not from the license manager. ApplicationTracker is, therefore, able to derive detailed and accurate usage statistics about each application being tracked without using wrappers.

Open iT ApplicationTracker generates reports showing details of application usage through CPU, keyboard*, mouse* and I/O activity, and elapsed time. Each application is tracked to monitor where and when it is running, and who is running it. This tool is extremely flexible in handling different data types, unit of measurements, and time periods.

*Keyboard or mouse usage may not be available on all platforms

Avoid denials by distinguishing the actual licenses in use from those that are actually checked-out. Blue line shows how many licenses had been checked out while red line shows how many of those licenses were actively in use. ▶



Open IT Software tools* that analyze and optimize your IT resources:

LicenseAnalyzer™

Provides an enterprise view of software applications enabled by license managers, showing when and by whom they are used over time, by location, business unit or project group. Enables chargeback accounting, usage-based license agreements, accurate workflow analysis and optimal license usage.

LicenseOptimizer™

Monitors activity levels for installed applications and can free up unused licenses for active users on high priority projects, delivering extremely targeted license management.

SystemAnalyzer™

Measures CPU, memory and I/O usage for all applications, users, and hosts, as well as application usage and inventory for PCs and workstations. Permits fine-tuning of machine capacity and chargeback or usage accounting for a variety of system-wide IT functionalities.

StorageAnalyzer™

Delivers an overview of disk and backup data, enabling optimal data storage management. Shows trends and potential capacity problems and provides an accurate basis for charging for data storage services.

Application Tracker™

Monitors activity levels of all applications on Windows and Unix platforms. Includes an independent licensing method system that can run without using wrappers.

UsageAnalyzer™

Tracks keyboard and mouse activities to find inefficient computer user patterns and to monitor activity levels of user/hosts and applications.

*Supports Unix and Windows platforms.

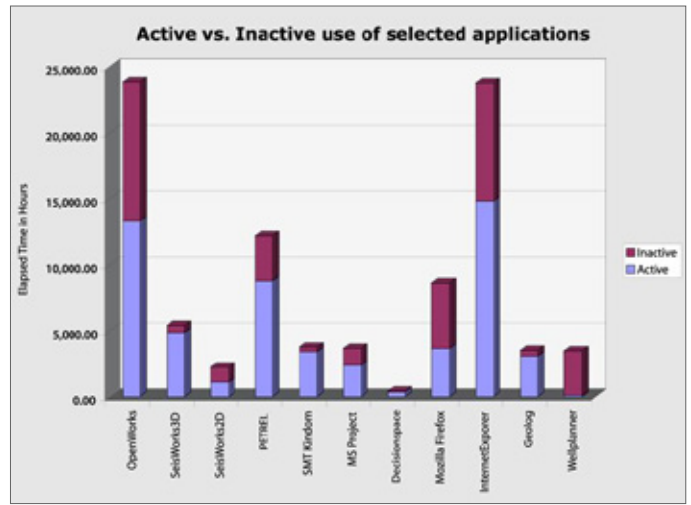
Flexible & Customizable Reporting

Open IT Software offers two flexible reporting servers.

Reporting Server is a reporting tool with proprietary database that gives users the ability to generate reports based from collected license usage data.

Analysis Server is an SQL-based reporting tool that enables users to make reports based from the data that has been collected. It includes a web interface that enables users to create customizable report templates. It also includes a real-time license monitoring system, an alert system for license usage, a powerful user profile definition system, and excel-based dashboards.

Based on extensive customer feedback and over a decade of experience, each Open IT module comes with a standard set of reports. With customizable templates, completely new reports can be easily built based on specific needs. Reports can be generated on a scheduled basis or created on demand. Each scheduled report can be customized to determine availability, frequency, resolution and data coverage. Choose from pie charts, line plots or tables for report formats and change the format on the fly for easy data analysis. With a single click, reports can be viewed in Microsoft® Excel™ for further work and may be shared with internal and external resources such as chargeback invoicing. Analysis Server is only available for Windows.



This chart shows the actual breakdown of active and inactive time in which certain applications are used. ▲

Active vs Inactive Time by User

Application Name	User Name	Active Time	Inactive Time
Application_A	User97	12,176.85	15,357.42
	User98	339.85	51.57
	User102	8,841.23	7,799.98
	User104	588.23	268.92
	User109	644.12	2,355.62
	User112	1,526.70	3,975.65
	User114	870.10	1,038.10
	User115	3,525.20	1,618.40
	User116	10,465.58	2,585.92
	User120	641.78	1,778.58
	User121	8.75	0.00
	User123	66.50	503.77
	User124	32.08	18.20

Active versus inactive usage time of an application drilled down to specific users. ▲

Open IT Software Suite

The Open IT Software Suite is a client/server based solution containing reporting tool mechanisms. The Open IT Core Server is the central hub for data collection, storage and processing. It receives collected usage data from optional client modules, which are installed on areas of the IT infrastructure targeted for usage monitoring. Processed data is then made available by the Core Server to the rest of the Open IT system for reporting and asset management purposes.

“
Open IT is an indispensable tool
for monitoring and managing
our data resources.
”

Ole Preben Berget
Statoil



Modular composition of the Open IT Software Suite

Get Started



Contact: sales@openit.com

Open IT® is a registered trademark of Open IT, Inc. Other products, services and brands mentioned herein are trademarks and/or registered trademark of their respective owners.
© 2014-2019 Open IT, Inc. All rights reserved.

AMERICAS

Two Park Ten Place
16300 Katy Freeway
Houston, TX 77094
Tel: 281-599-3400
Fax: 707-760-4575

EUROPE | AFRICA

Karoline Kristiansens v. 5
N-0661 Oslo,
Norway
Tel: +47 22 20 40 50

Im Neuenbühl
D-71287 Weissach,
Germany
Tel: +49 7152 307090-0

ASIA | MIDDLE EAST

Doña Aurora Blvd.
Gulang-Gulang
Lucena City 4301
Philippines
Tel: +63 42 710 8566